



Geotextile Dewatering Containers

High-performance dewatering solutions for mining, dredging, wastewater, sludge management and environmental remediation.



Technical Solutions for High-Volume Dewatering



More Than a Bag Supplier



Technical expertise led by Ben Lewis, geotechnical engineer



Preventing common geobag failures: poor planning, flocculation control, operator management

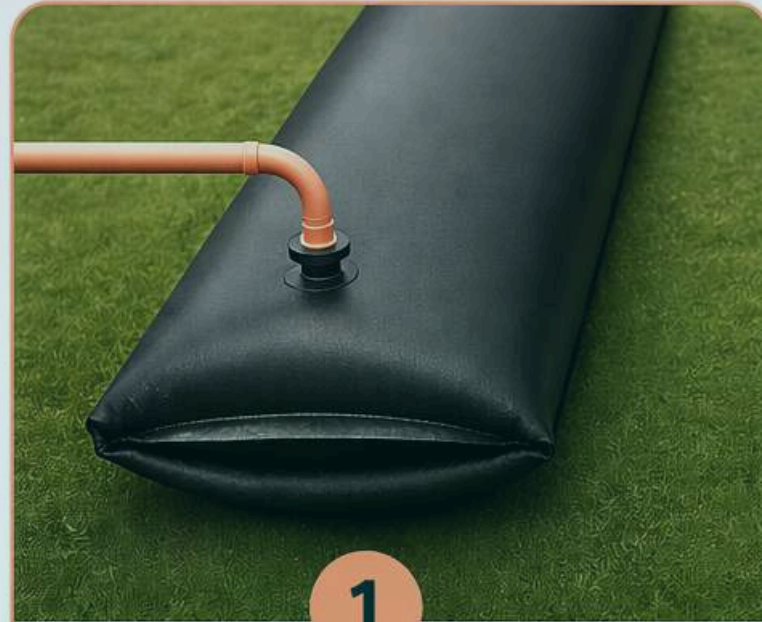


Full services: feasibility, site design review and support, geotextile selection, education & training



The Kontain[®] Process

Smarter containment. Cleaner outcomes.



1



INFLOW

A slurry mixture enters the containment unit. Specialty additives help particles clump together while allowing water to separate.

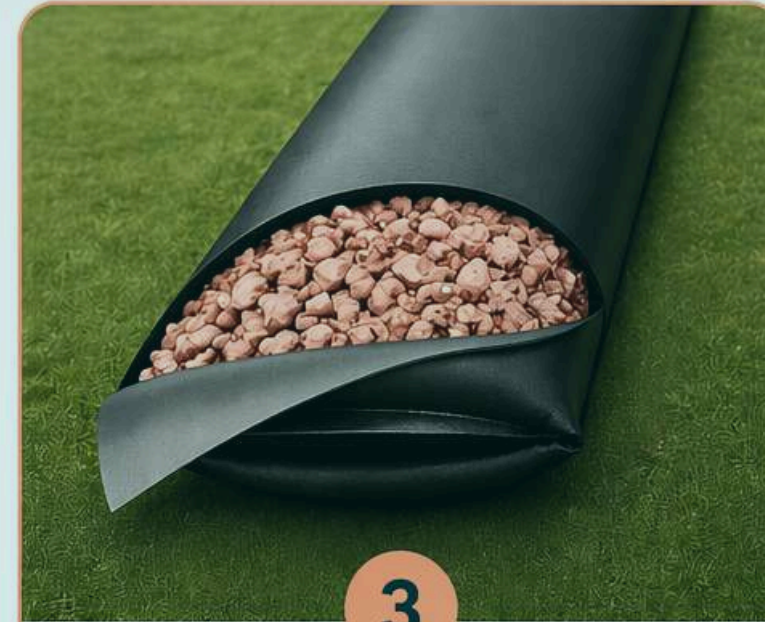


2



DRAINAGE

Liquid passes through the system and drains out. The vast majority of solids are retained inside, and the clarified liquid can be collected for reuse.



3



SOLIDS STORAGE

Solids remain contained inside the unit. This reduces volume and enables easy transport and responsible disposal or recovery.



Designed for environmental responsibility



Supports water recovery and resource reuse



Reduces volume for simpler handling and transport



Helps reduce environmental impact

Application Areas

Where Geobags Work Best



Mining: pond cleanouts, tailings management, TSF maintenance



Water/Municipal: sediment restoration, wastewater plants, sewage lagoons



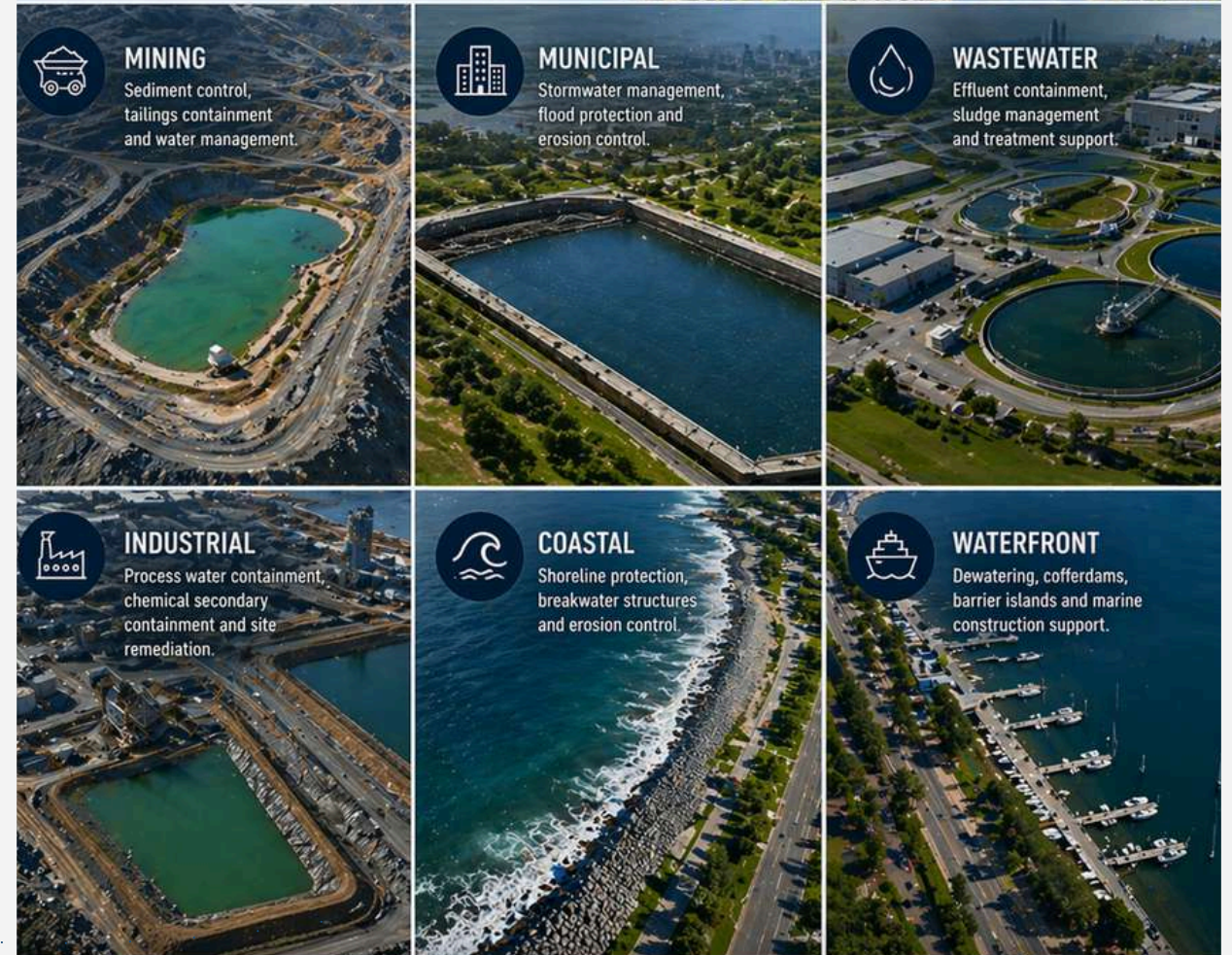
Industrial: abattoir ponds, industrial sludge ponds



Dredging: coastal remediation, emergency desludging, beneficial reuse

GEOBAGS

BUILT FOR TOUGH ENVIRONMENTS.



CONTAIN



PROTECT



SUSTAIN



PERFORM



A Smarter Alternative to Traditional Methods



Lower capital costs, faster mobilisation, and reduced footprint through stacking



Minimal mechanical maintenance with better environmental compliance



"Geobags often outperform mainstream mechanical methods when planned correctly."



Flocculation expertise is often key to success

How Flocc Works

Flocc brings clarity to water by binding fine particles together so they can settle.

1 BEFORE FLOCC



Water contains fine, suspended particles.

2 DURING FLOCCULATION



Flocc is added and particles clump together (floc).

3 AFTER SETTLING



Floc settles to the bottom. Clear water remains above and can be decanted.



Improves water clarity



Helps particles clump and settle



Supports water recovery and reuse



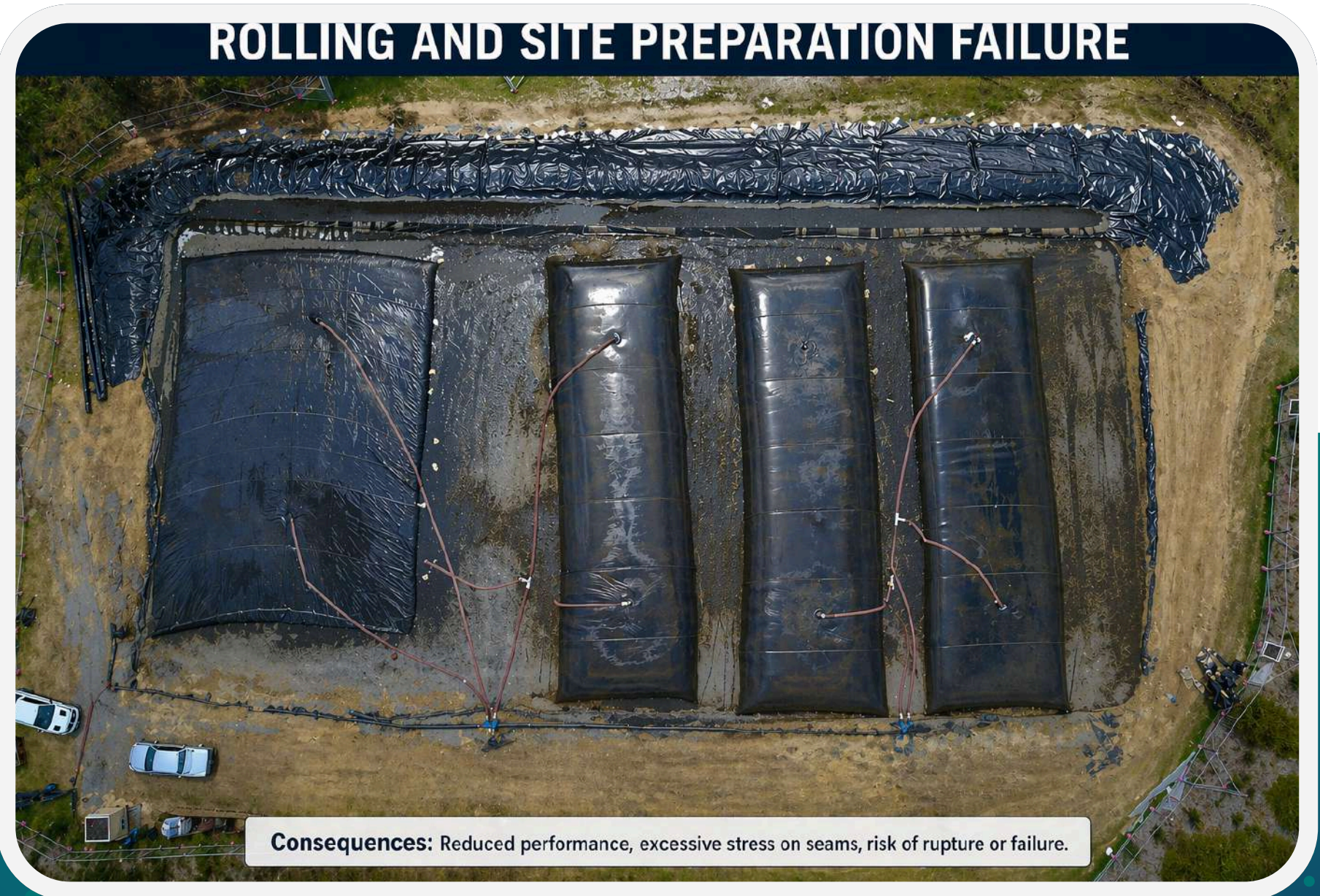
Promotes more sustainable outcomes



Understanding Common Pitfalls

- ✓ **Flocculant management issues: incorrect doses, infrequent adjustment**
- ✓ **Design problems: poor geotextile choice, bad stacking layout, drainage failures, over filling**
- ✓ **Execution failures: insufficient operator experience, poor supplier support**

Why Some Geobag Projects Fail



1. Assessment

Slurry behaviour analysis, solids retention testing, volume predictions, filtration performance, stacking stability, and polymer dosing strategy.

2. Design Support

Site layouts, stacking configurations, drainage suggestions, filling sequences, and contingency plans.

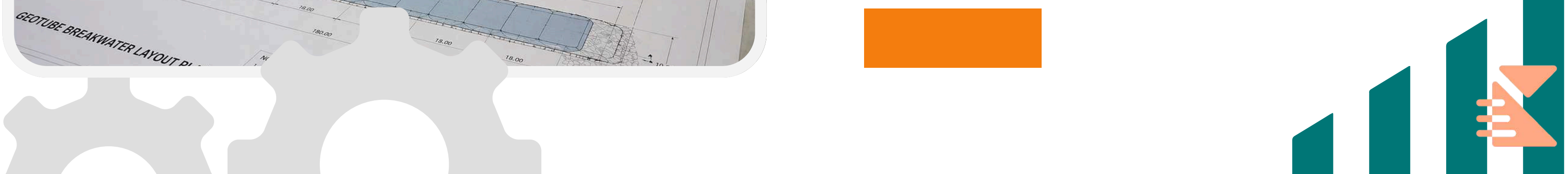
3. Site Support

Commissioning assistance, operator training, troubleshooting, and ongoing support.

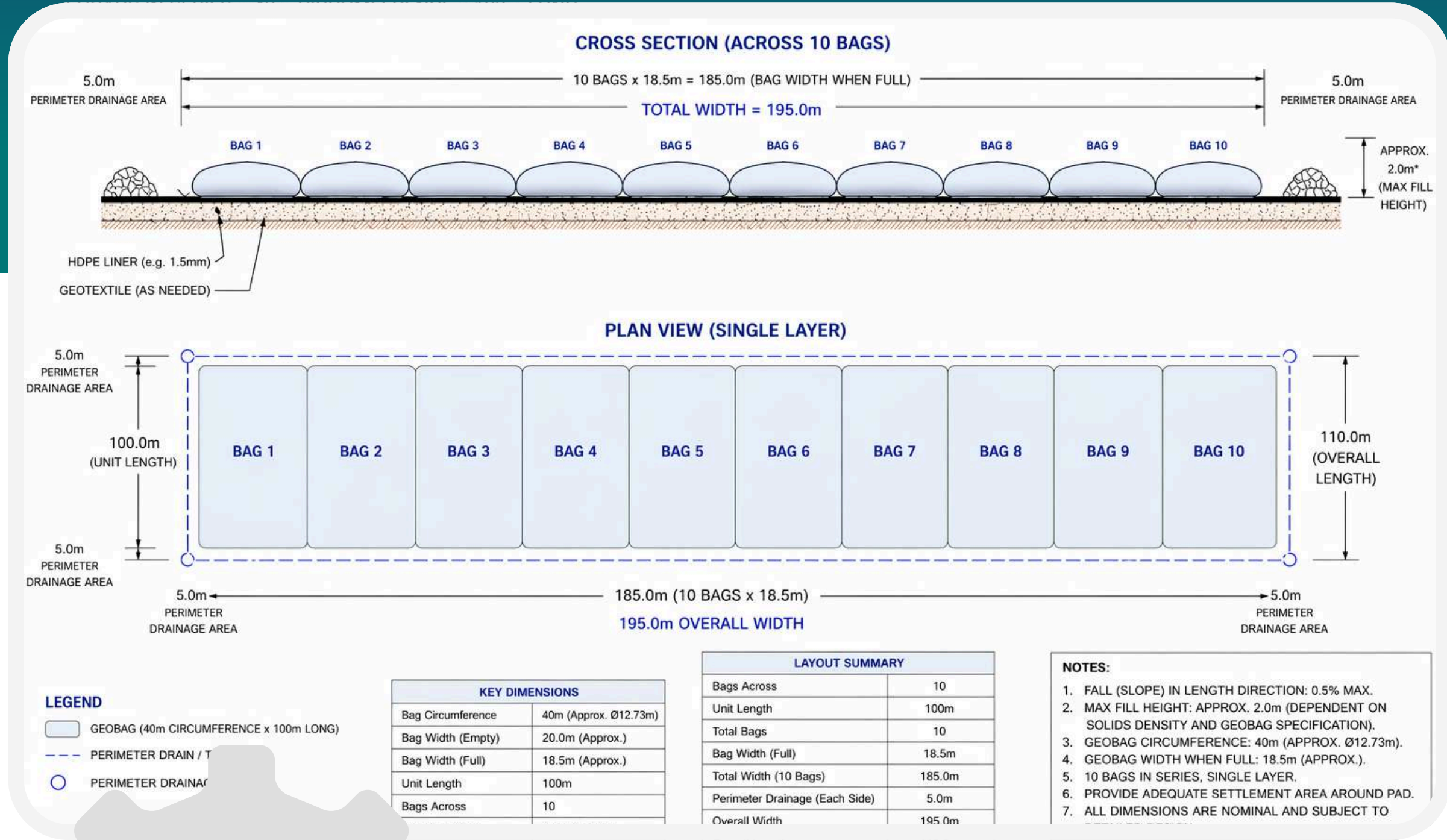


Comprehensive Technical Support from Assessment to Optimization

Engineering the Outcome



Layout Plan Support and Optimisation



Technical Specifications

Kontain Geobag Series



1000 Series: Coastal & sediments, MD/CD 200 kN/m, pore $\leq 0.45\text{mm}$



500 Series: Mining & tailings, MD 90/CD 130 kN/m, pore $\leq 0.30\text{mm}$

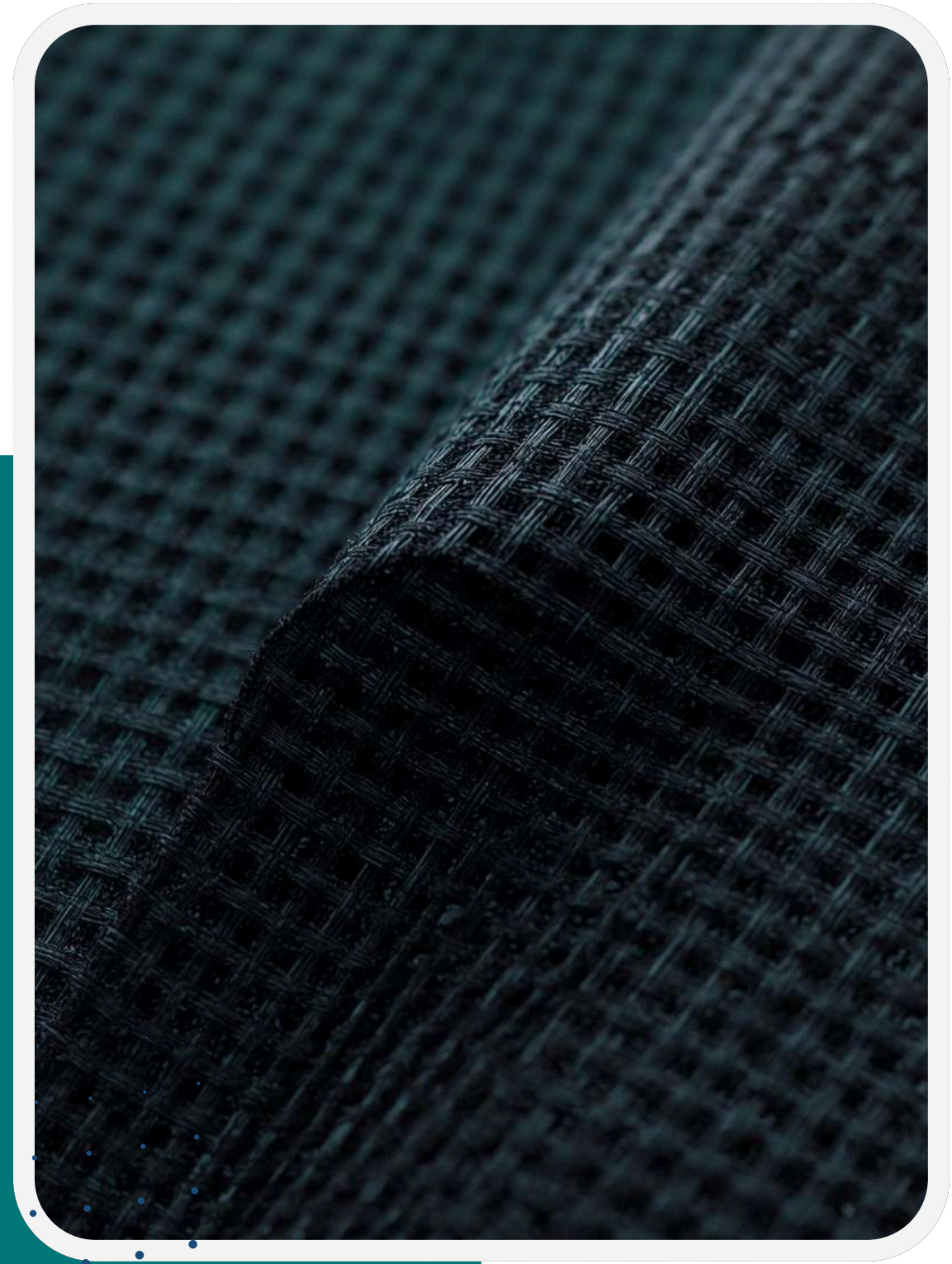


300 Series: Biosolids & colloidal, MD 90/CD 120 kN/m, pore $\leq 0.425\text{mm}$



Features:

- High-tenacity woven PP
- Sizes 5m^3 – 3000m^3
- Black
- 250mm fill ports PVC flanges



GEOTEXTILE BAG PYRAMID BREAKWATER

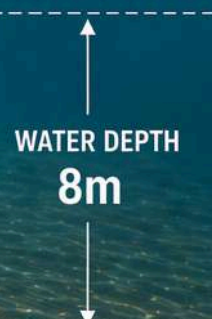
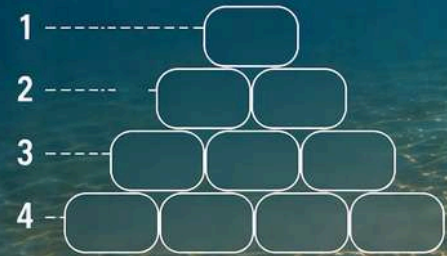
SMART COASTAL PROTECTION



DESIGNED FOR
8m DEPTH



PYRAMID STACK CONFIGURATION



WATER DEPTH
8m



REDUCES WAVE ENERGY



PROTECTS COASTLINES



DURABLE & RELIABLE



ECO FRIENDLY

Contact us for a feasibility assessment or technical consultation.

Let's Discuss Your Project

Contact Us



ben.lewis@kontainsolutions.com



[kontainsolutions.com](https://www.kontainsolutions.com)



+61 405 812 770

